

Signify Classified - Internal
Cooper Lighting Solutions Photometric Lab
1121 Highway 74 South
Peachtree City, GA 30269



Scaled data based on original data using
LM-79-2019 Approved Method: Electrical and Photometric Measurements of Solid-
State Lighting Products

Test Report Prepared for

Cooper Lighting Solutions

Brand: McGRAW-EDISON

Report Number: P641946

Luminaire Tested: GWS-SA6B-830-U-SLL-W-HSS

Issue Date: 1/10/2023

Test Information

Test Method: LM-79-2019
Report Number: P641946
TEST IS SCALED FROM IESNA LM-79-08 TEST DATA (G2-2209-782-40)
Test Lab: COOPER LIGHTING SOLUTIONS
Issue Date: 1/10/2023
Manufacturer: COOPER LIGHTING SOLUTIONS
Product Line: McGRAW-EDISON
Catalog Number: GWS-SA6B-830-U-SLL-W-HSS
Description: GALLEON WALL SLIM LUMINAIRE. (6) LIGHTSQUARES WITH 16 LEDS EACH AND SPILL LIGHT ELIMINATOR LEFT OPTICS WITH HOUSE SIDE SHIELD
Light Source: (96) 3000K CCT, 80 CRI LEDS
Ballast/Driver: -

Summary

Lumens per Lamp: N/A
Luminaire Lumens: 10183.5 lumens
Efficiency: N/A
Efficacy: 73.3 lumens/watt
Luminous Opening: Rectangular (W 2' x L: 1' x H: 0')
IES Classification: Type III - Short
BUG Rating: B1 - U0 - G2

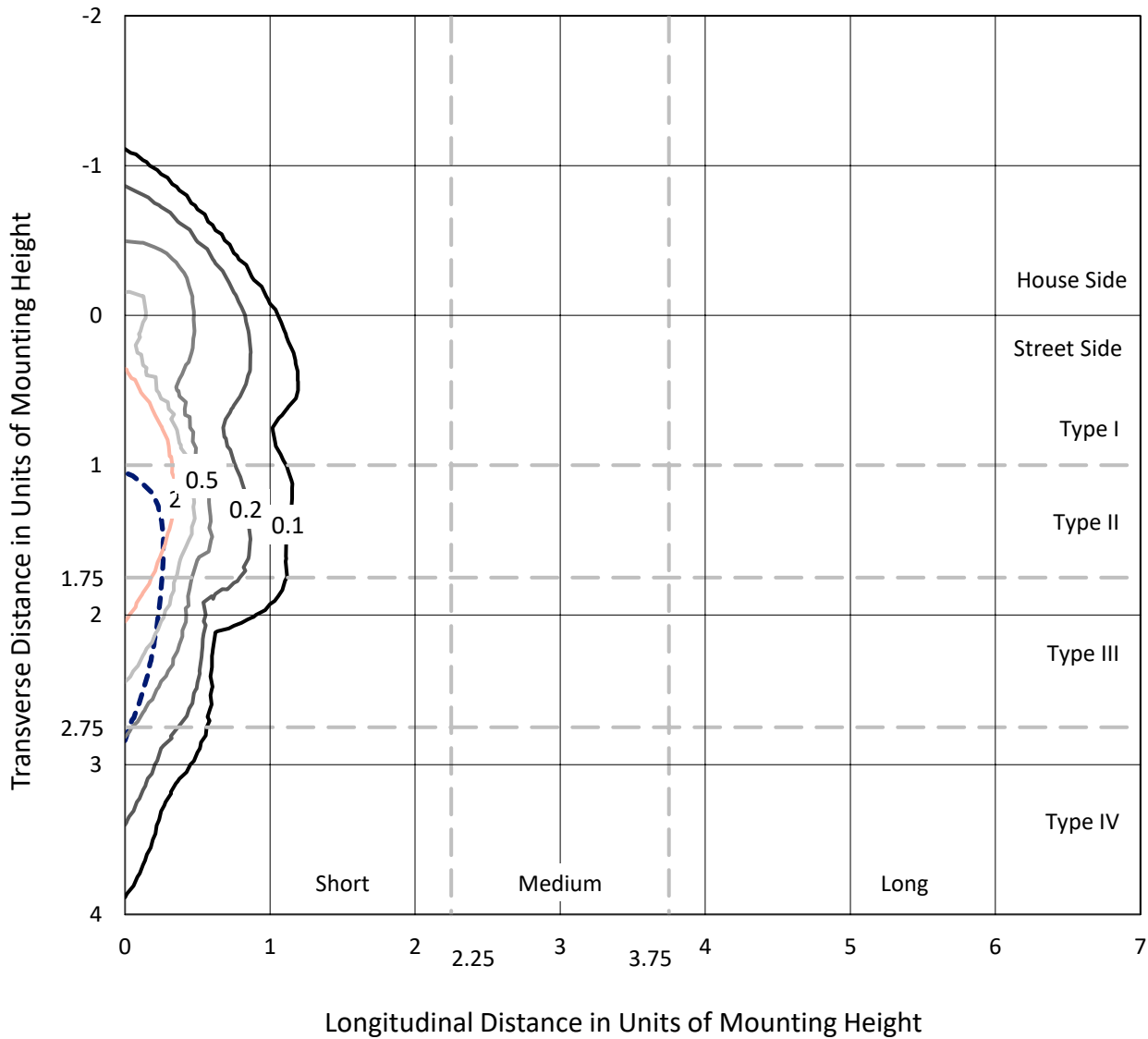
Input Watts (W): 138.9
Input Voltage (V): 120
Input Current (Ain): NR
Voltage Rise (V): NR
Power Factor: NR
Total Harmonic Distortion (THDi): NR
Frequency (hertz): 0
Stabilization Time: NR
Operation Time: NR
Ambient Temperature (°C): NR
Test Distance: 28.75 FT



REPORT NUMBER: P641946
 CATALOG NUMBER: GWS-SA6B-830-U-SLL-W-HSS

Iso-Footcandle Lines of Horizontal Illumination

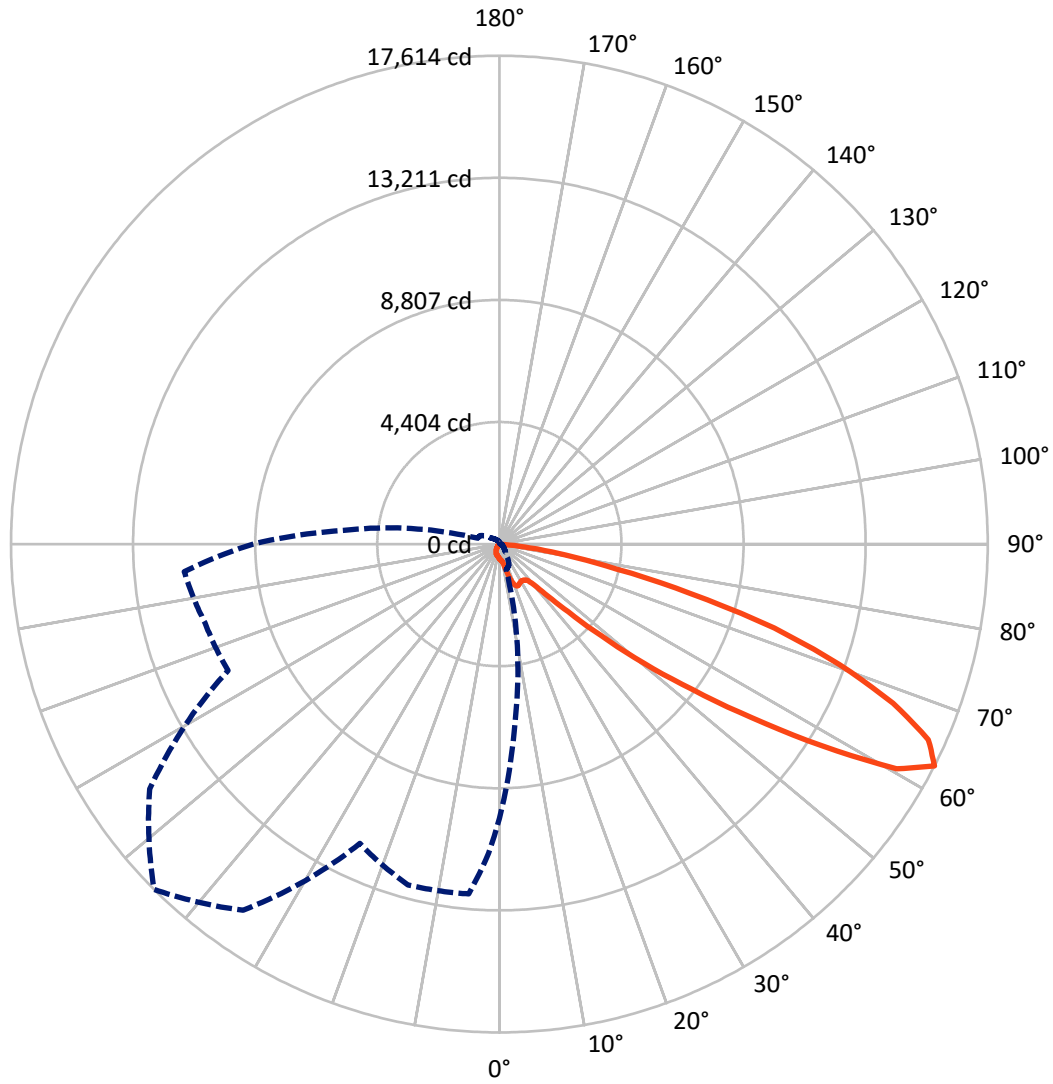
× Max cd
 - - - 1/2 Max cd



Based on 20 foot mounting height. Maximum calculated value = 4.5 fc
 Type III - Short - N/A

REPORT NUMBER: P641946
CATALOG NUMBER: GWS-SA6B-830-U-SLL-W-HSS

Luminous Intensity Polar Plot



— Vertical Plane Through 315-Deg Lateral - - - Horizontal Cone Through 62.5-Deg Vertical

REPORT NUMBER: P641946
 CATALOG NUMBER: GWS-SA6B-830-U-SLL-W-HSS

FLUX DISTRIBUTION:

		Downward	Upward	Total
House Side	Lumens	1183.2	0.0	1183.2
	% Fixture	11.6	0.0	11.6
Street Side	Lumens	9000.3	0.0	9000.3
	% Fixture	88.4	0.0	88.4
Total	Lumens	10183.5	0.0	10183.5
	% Fixture	100.0	0.0	100.0

ZONAL LUMENS:

Zone	Lumens	% Fixture
0°-10°	45.6	0.4
10°-20°	156.3	1.5
20°-30°	353.1	3.5
30°-40°	608.4	6.0
40°-50°	1147.6	11.3
50°-60°	2562.3	25.2
60°-70°	3427.0	33.7
70°-80°	1718.5	16.9
80°-90°	164.7	1.6
90°-100°	0.0	0.0
100°-110°	0.0	0.0
110°-120°	0.0	0.0
120°-130°	0.0	0.0
130°-140°	0.0	0.0
140°-150°	0.0	0.0
150°-160°	0.0	0.0
160°-170°	0.0	0.0
170°-180°	0.0	0.0
0°-90°	10183.5	100.0
0°-180°	10183.5	100.0

Coefficient of Utilization



REPORT NUMBER: P641946

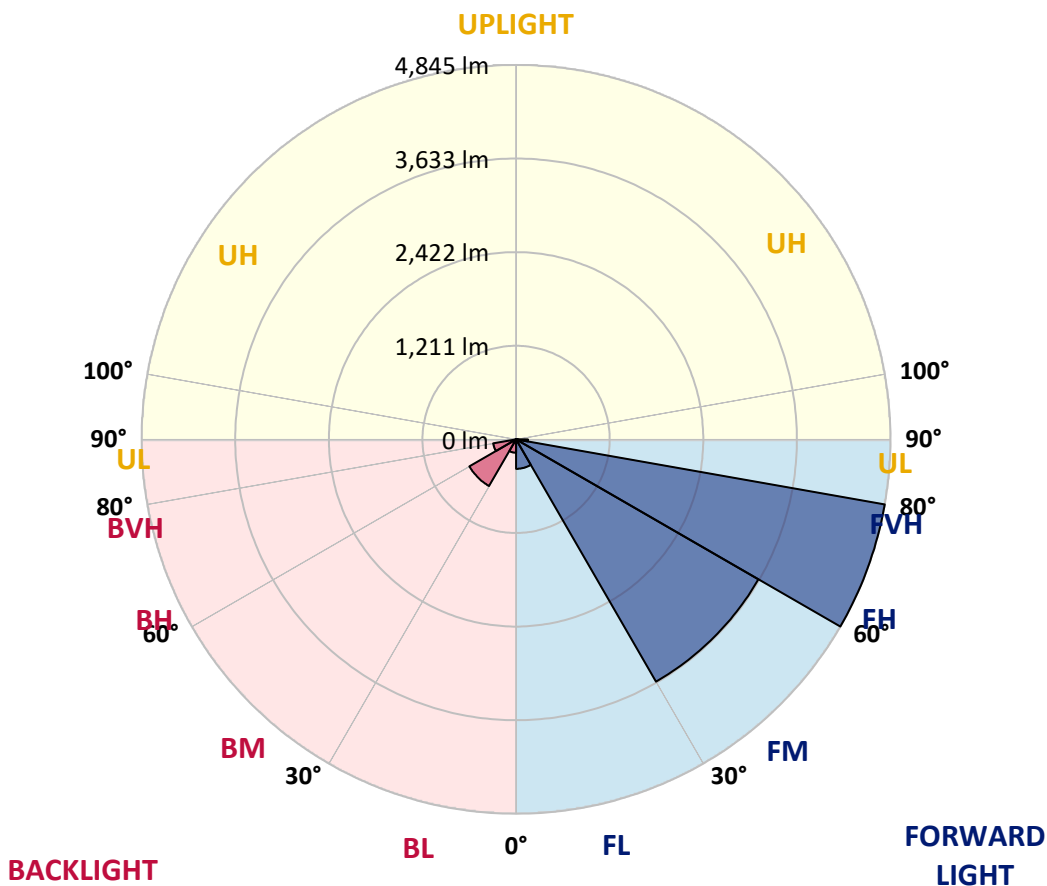
CATALOG NUMBER: GWS-SA6B-830-U-SLL-W-HSS

LUMINAIRE CLASSIFICATION SYSTEM LUMEN TABLE AND BUG RATING:

Zone	Lumens	% Fixture	Zone Rating/Lumen Limit		
			B	U	G
FL (0°-30°)	381.4	3.7			
FM (30°-60°)	3620.5	35.6			
FH (60°-80°)	4844.6	47.6			G2/5000
FVH (80°-90°)	153.8	1.5			G2/225
BL (0°-30°)	173.7	1.7	B1/500		
BM (30°-60°)	697.7	6.9	B1/1000		
BH (60°-80°)	300.9	3.0	B1/500		G1/500
BVH (80°-90°)	11.0	0.1			G1/100
UL (90°-100°)	0.0	0.0		U0/0	
UH (100°-180°)	0.0	0.0		U0/0	

BUG Rating: B1-U0-G2

Type III Short





REPORT NUMBER: P641946
 CATALOG NUMBER: GWS-SA6B-830-U-SLL-W-HSS

CANDELA DISTRIBUTION (FULL):

	0°	2°	5°	15°	25°	35°	45°	55°	65°	75°	85°
0°	528.1	528.1	528.1	528.1	528.1	528.1	528.1	528.1	528.1	528.1	528.1
2.5°	522.1	520.9	518.5	511.3	505.2	501.6	494.4	494.4	493.2	490.8	485.9
5°	505.2	500.4	495.6	482.3	467.8	459.4	449.8	448.5	448.5	446.1	444.9
7.5°	478.7	473.9	467.8	446.1	432.9	424.4	416.0	414.8	411.2	411.2	411.2
10°	464.2	457.0	447.3	423.2	410.0	402.7	396.7	393.1	390.7	387.1	385.8
12.5°	495.6	482.3	461.8	418.4	400.3	390.7	383.4	381.0	373.8	369.0	365.4
15°	593.2	560.7	519.7	429.3	396.7	382.2	372.6	367.8	361.7	353.3	347.3
17.5°	753.6	706.6	637.9	464.2	393.1	375.0	362.9	354.5	346.1	336.4	329.2
20°	975.5	905.5	823.5	528.1	393.1	366.6	352.1	341.2	329.2	318.3	309.9
22.5°	1257.6	1187.7	1047.8	636.7	397.9	355.7	338.8	324.4	309.9	300.2	290.6
25°	1573.5	1474.7	1344.4	768.1	411.2	341.2	323.1	308.7	295.4	283.4	272.5
27.5°	1925.6	1818.3	1644.7	955.0	440.1	326.8	306.3	293.0	280.9	268.9	254.4
30°	2250.0	2186.1	2008.8	1179.3	487.1	317.1	293.0	280.9	268.9	253.2	239.9
32.5°	2639.4	2526.1	2380.2	1434.9	549.8	307.5	282.2	265.3	255.6	241.2	226.7
35°	3031.3	2934.9	2743.1	1749.6	619.8	297.8	268.9	253.2	244.8	227.9	212.2
37.5°	3435.3	3413.6	3224.3	2098.1	688.5	287.0	253.2	243.6	235.1	215.8	197.7
40°	3833.2	3793.4	3618.5	2496.0	730.7	274.9	239.9	233.9	224.3	202.6	182.1
42.5°	4214.2	4184.1	4014.0	2877.0	724.7	264.1	226.7	219.5	212.2	190.5	165.2
45°	4682.0	4632.6	4418.0	3159.1	663.2	276.1	213.4	201.4	200.2	179.7	148.3
47.5°	5557.4	5394.7	5030.5	3376.2	601.7	307.5	199.0	184.5	192.9	168.8	131.4
50°	6783.7	6592.0	6065.1	3545.0	600.5	348.5	196.5	168.8	186.9	160.4	117.0
52.5°	8016.0	7678.4	7038.1	3635.4	645.1	378.6	218.2	153.1	179.7	151.9	106.1
55°	9196.5	8495.9	7445.7	3336.4	680.1	411.2	258.0	144.7	166.4	142.3	100.1
57.5°	10321.5	9153.1	7622.9	2639.4	797.0	424.4	282.2	148.3	147.1	130.2	95.3
60°	10475.8	9121.7	7264.8	1535.0	879.0	401.5	272.5	165.2	129.0	115.8	86.8
62.5°	9892.2	8515.2	6448.5	957.4	816.3	393.1	242.4	188.1	117.0	102.5	76.0
65°	9006.0	7563.8	5376.6	617.4	618.6	436.5	212.2	184.5	109.7	90.4	65.1
67.5°	7620.5	6330.3	4235.9	413.6	349.7	372.6	185.7	126.6	107.3	77.2	50.6
70°	5562.3	4506.0	2757.6	276.1	208.6	297.8	155.5	90.4	101.3	63.9	36.2
72.5°	4065.9	3027.7	1539.8	180.9	118.2	173.6	114.5	65.1	78.4	47.0	25.3
75°	2926.4	2083.6	879.0	115.8	78.4	95.3	74.8	44.6	50.6	37.4	22.9
77.5°	1408.3	1015.3	399.1	63.9	53.1	48.2	39.8	27.7	31.4	33.8	20.5
80°	53.1	39.8	30.1	31.4	33.8	21.7	18.1	14.5	18.1	22.9	10.9
82.5°	0.0	0.0	0.0	3.6	4.8	6.0	7.2	6.0	7.2	8.4	1.2
85°	0.0	0.0	0.0	0.0	0.0	0.0	0.0	0.0	0.0	0.0	0.0
87.5°	0.0	0.0	0.0	0.0	0.0	0.0	0.0	0.0	0.0	0.0	0.0
90°	0.0	0.0	0.0	0.0	0.0	0.0	0.0	0.0	0.0	0.0	0.0



REPORT NUMBER: P641946

CATALOG NUMBER: GWS-SA6B-830-U-SLL-W-HSS

CANDELA DISTRIBUTION (continued):

	90°	95°	105°	115°	125°	135°	145°	155°	165°	175°	180°
0°	528.1	528.1	528.1	528.1	528.1	528.1	528.1	528.1	528.1	528.1	528.1
2.5°	489.5	487.1	489.5	492.0	494.4	496.8	493.2	495.6	498.0	492.0	494.4
5°	451.0	449.8	457.0	460.6	465.4	467.8	465.4	465.4	464.2	457.0	457.0
7.5°	417.2	418.4	424.4	432.9	438.9	442.5	440.1	438.9	435.3	424.4	424.4
10°	391.9	391.9	401.5	408.8	417.2	420.8	418.4	414.8	411.2	400.3	399.1
12.5°	371.4	371.4	378.6	390.7	400.3	405.1	403.9	399.1	393.1	382.2	381.0
15°	352.1	350.9	361.7	372.6	385.8	391.9	389.5	385.8	375.0	365.4	362.9
17.5°	332.8	331.6	341.2	355.7	370.2	378.6	377.4	369.0	359.3	347.3	344.9
20°	313.5	311.1	323.1	337.6	352.1	360.5	358.1	350.9	338.8	326.8	324.4
22.5°	294.2	293.0	301.4	313.5	326.8	334.0	332.8	326.8	314.7	303.9	303.9
25°	272.5	272.5	278.5	287.0	296.6	300.2	301.4	299.0	291.8	285.8	285.8
27.5°	254.4	250.8	253.2	255.6	260.4	266.5	266.5	268.9	270.1	267.7	268.9
30°	239.9	233.9	230.3	225.5	223.1	225.5	227.9	236.3	244.8	249.6	252.0
32.5°	223.1	215.8	206.2	192.9	184.5	182.1	189.3	205.0	220.7	231.5	237.5
35°	206.2	196.5	178.5	159.2	148.3	144.7	153.1	171.2	194.1	213.4	221.9
37.5°	189.3	176.0	150.7	127.8	115.8	113.3	121.8	141.1	167.6	194.1	205.0
40°	170.0	154.3	124.2	100.1	90.4	88.0	95.3	114.5	142.3	172.4	189.3
42.5°	150.7	131.4	100.1	79.6	69.9	69.9	79.6	94.1	119.4	151.9	172.4
45°	131.4	110.9	82.0	63.9	57.9	59.1	65.1	79.6	100.1	133.8	153.1
47.5°	113.3	95.3	67.5	53.1	48.2	49.4	56.7	68.7	85.6	115.8	136.3
50°	97.7	80.8	59.1	44.6	41.0	43.4	50.6	61.5	76.0	102.5	119.4
52.5°	88.0	72.3	54.3	38.6	36.2	38.6	45.8	55.5	68.7	90.4	107.3
55°	83.2	71.1	54.3	35.0	31.4	33.8	41.0	50.6	61.5	82.0	96.5
57.5°	82.0	73.6	57.9	31.4	26.5	28.9	36.2	45.8	56.7	74.8	86.8
60°	77.2	69.9	56.7	25.3	20.5	24.1	30.1	39.8	51.8	69.9	80.8
62.5°	67.5	61.5	49.4	20.5	15.7	18.1	25.3	35.0	47.0	63.9	76.0
65°	55.5	49.4	38.6	13.3	9.6	12.1	19.3	30.1	41.0	57.9	68.7
67.5°	41.0	35.0	26.5	8.4	4.8	8.4	15.7	25.3	37.4	51.8	62.7
70°	25.3	20.5	14.5	4.8	3.6	7.2	14.5	24.1	33.8	48.2	59.1
72.5°	14.5	9.6	6.0	2.4	3.6	7.2	14.5	24.1	32.6	45.8	55.5
75°	10.9	6.0	2.4	1.2	2.4	6.0	13.3	21.7	31.4	43.4	53.1
77.5°	7.2	3.6	1.2	0.0	1.2	4.8	12.1	20.5	28.9	41.0	50.6
80°	1.2	0.0	0.0	0.0	0.0	3.6	10.9	18.1	26.5	36.2	44.6
82.5°	0.0	0.0	0.0	0.0	0.0	1.2	8.4	15.7	22.9	30.1	36.2
85°	0.0	0.0	0.0	0.0	0.0	0.0	4.8	12.1	18.1	22.9	25.3
87.5°	0.0	0.0	0.0	0.0	0.0	0.0	0.0	6.0	12.1	14.5	16.9
90°	0.0	0.0	0.0	0.0	0.0	0.0	0.0	0.0	0.0	0.0	0.0



REPORT NUMBER: P641946

CATALOG NUMBER: GWS-SA6B-830-U-SLL-W-HSS

CANDELA DISTRIBUTION (continued):

	185°	195°	205°	215°	225°	235°	245°	255°	265°	270°	275°
0°	528.1	528.1	528.1	528.1	528.1	528.1	528.1	528.1	528.1	528.1	528.1
2.5°	493.2	500.4	500.4	505.2	511.3	522.1	528.1	536.6	542.6	548.6	551.0
5°	455.8	457.0	458.2	460.6	467.8	479.9	490.8	504.0	519.7	531.7	539.0
7.5°	424.4	424.4	424.4	428.1	435.3	443.7	454.6	472.7	490.8	505.2	517.3
10°	397.9	401.5	402.7	408.8	417.2	428.1	440.1	455.8	476.3	495.6	517.3
12.5°	381.0	384.6	390.7	396.7	405.1	417.2	430.5	451.0	493.2	533.0	578.8
15°	365.4	370.2	377.4	385.8	395.5	408.8	423.2	465.4	564.3	639.1	711.4
17.5°	348.5	355.7	365.4	373.8	385.8	400.3	418.4	500.4	694.5	818.7	941.7
20°	326.8	336.4	347.3	360.5	375.0	391.9	418.4	572.7	882.6	1061.1	1223.9
22.5°	306.3	315.9	329.2	346.1	362.9	379.8	424.4	682.5	1125.0	1350.5	1556.7
25°	289.4	301.4	314.7	329.2	348.5	367.8	438.9	836.8	1416.8	1707.4	1853.3
27.5°	273.7	288.2	301.4	313.5	330.4	352.1	471.5	1043.0	1761.6	2057.1	2171.6
30°	258.0	274.9	288.2	300.2	317.1	340.0	520.9	1305.9	2145.1	2432.1	2444.1
32.5°	244.8	260.4	276.1	288.2	303.9	330.4	589.6	1613.3	2538.2	2815.5	2702.1
35°	230.3	248.4	262.9	276.1	293.0	321.9	669.2	1944.9	2934.9	3167.6	2959.0
37.5°	215.8	236.3	254.4	264.1	280.9	313.5	727.1	2291.0	3340.0	3511.2	3184.5
40°	202.6	225.5	246.0	255.6	264.1	302.7	735.5	2645.5	3751.2	3850.1	3396.7
42.5°	188.1	213.4	231.5	244.8	252.0	295.4	684.9	2944.5	4096.0	4187.7	3674.0
45°	172.4	202.6	217.0	226.7	241.2	300.2	619.8	3176.0	4490.3	4648.3	4131.0
47.5°	156.8	190.5	202.6	209.8	229.1	329.2	595.7	3330.4	5140.2	5468.2	4901.5
50°	142.3	179.7	192.9	191.7	226.7	366.6	622.2	3447.3	6116.9	6502.8	5957.8
52.5°	126.6	167.6	183.3	178.5	244.8	395.5	675.2	3540.2	6868.1	7715.8	7377.0
55°	113.3	154.3	168.8	167.6	278.5	417.2	716.2	3050.6	7179.2	8843.2	8975.8
57.5°	103.7	139.9	151.9	172.4	300.2	417.2	828.4	2165.6	7185.2	9672.8	11098.0
60°	95.3	126.6	135.0	189.3	291.8	395.5	819.9	1326.4	6622.1	9616.1	12226.6
62.5°	88.0	114.5	125.4	194.1	258.0	391.9	740.3	822.3	5647.9	8884.2	11407.9
65°	82.0	104.9	120.6	178.5	233.9	419.6	499.2	590.8	4580.8	8049.8	10468.6
67.5°	76.0	96.5	127.8	145.9	212.2	375.0	360.5	419.6	3595.6	7134.6	9606.4
70°	71.1	91.6	135.0	119.4	185.7	293.0	255.6	318.3	2752.8	5952.9	8392.2
72.5°	67.5	85.6	113.3	94.1	150.7	226.7	178.5	231.5	1799.0	4647.1	6841.6
75°	63.9	78.4	83.2	76.0	112.1	148.3	135.0	155.5	1071.9	3396.7	5190.9
77.5°	62.7	73.6	67.5	61.5	76.0	88.0	102.5	104.9	523.3	1698.9	2720.2
80°	55.5	66.3	57.9	50.6	51.8	57.9	76.0	69.9	119.4	431.7	725.9
82.5°	43.4	51.8	48.2	42.2	42.2	42.2	50.6	47.0	38.6	194.1	328.0
85°	30.1	36.2	36.2	33.8	32.6	32.6	31.4	30.1	10.9	12.1	18.1
87.5°	20.5	25.3	26.5	25.3	21.7	19.3	16.9	14.5	4.8	0.0	2.4
90°	0.0	0.0	0.0	0.0	0.0	0.0	0.0	0.0	0.0	0.0	0.0



REPORT NUMBER: P641946

CATALOG NUMBER: GWS-SA6B-830-U-SLL-W-HSS

CANDELA DISTRIBUTION (continued):

	285°	295°	305°	315°	325°	335°	345°	355°	358°	360°
0°	528.1	528.1	528.1	528.1	528.1	528.1	528.1	528.1	528.1	528.1
2.5°	559.5	563.1	563.1	558.3	554.7	545.0	535.4	525.7	523.3	522.1
5°	559.5	574.0	581.2	580.0	571.5	555.9	535.4	513.7	507.6	505.2
7.5°	551.0	578.8	600.5	604.1	588.4	560.7	523.3	490.8	482.3	478.7
10°	570.3	624.6	668.0	674.0	655.9	601.7	541.4	485.9	472.7	464.2
12.5°	674.0	763.3	816.3	841.6	806.7	737.9	637.9	539.0	508.8	495.6
15°	883.8	1010.4	1111.7	1111.7	1079.2	957.4	830.8	670.4	629.4	593.2
17.5°	1152.7	1311.9	1401.1	1391.5	1342.0	1256.4	1104.5	874.2	791.0	753.6
20°	1459.0	1554.2	1574.7	1568.7	1547.0	1497.6	1392.7	1145.5	1033.4	975.5
22.5°	1724.3	1698.9	1668.8	1644.7	1638.7	1653.1	1638.7	1448.1	1360.1	1257.6
25°	1903.9	1760.4	1670.0	1626.6	1647.1	1730.3	1820.7	1749.6	1679.6	1573.5
27.5°	2001.6	1753.2	1623.0	1578.4	1613.3	1731.5	1928.0	2048.6	1976.3	1925.6
30°	2054.6	1747.2	1592.8	1549.4	1602.5	1750.8	2002.8	2328.4	2330.8	2250.0
32.5°	2130.6	1785.8	1598.9	1559.1	1630.2	1808.7	2096.8	2612.9	2682.9	2639.4
35°	2216.2	1844.8	1626.6	1590.4	1678.4	1885.8	2201.8	2899.9	3045.8	3031.3
37.5°	2297.0	1911.2	1691.7	1656.7	1752.0	1952.2	2303.0	3182.0	3384.6	3435.3
40°	2381.4	2004.0	1891.9	1925.6	1978.7	2057.1	2393.5	3426.8	3757.2	3833.2
42.5°	2580.4	2325.9	2497.2	2561.1	2568.3	2406.7	2591.2	3740.3	4123.8	4214.2
45°	3024.1	2898.7	3389.4	3479.9	3432.9	2943.3	3067.5	4192.5	4636.2	4682.0
47.5°	3584.8	3642.7	4610.9	4923.2	4641.0	3576.3	3645.1	5143.9	5574.3	5557.4
50°	4238.3	4512.0	5997.5	6734.3	6059.0	4398.7	4310.7	6313.5	6835.6	6783.7
52.5°	5011.2	5522.5	7663.9	8710.5	8071.5	5323.5	5287.3	7862.9	8181.2	8016.0
55°	5984.3	6497.9	9581.1	11043.7	10134.6	6452.1	6576.3	9659.5	9721.0	9196.5
57.5°	7436.0	7770.0	11840.7	13719.3	12288.1	7985.9	8886.6	12050.5	11315.0	10321.5
60°	10071.9	9406.3	14024.4	16456.5	14579.1	10143.0	11933.6	13467.3	11845.6	10475.8
62.5°	10989.5	10795.3	15391.8	17614.0	16120.1	11914.3	12725.8	12664.3	11158.3	9892.2
65°	9599.2	10449.3	15147.0	17002.7	15922.3	11622.5	11419.9	11778.0	10384.2	9006.0
67.5°	8867.3	9636.6	14219.7	15315.8	14826.3	10632.6	10179.2	10081.5	8717.8	7620.5
70°	8129.4	8891.4	12875.3	13011.6	12783.7	9019.2	8423.6	7768.8	6516.0	5562.3
72.5°	7241.9	7661.5	11010.0	10363.7	10105.6	7083.9	6958.5	5850.4	4884.6	4065.9
75°	6315.9	6194.1	8583.9	7112.9	7305.8	5511.6	5877.0	4296.2	3578.8	2926.4
77.5°	4594.0	4503.6	5749.2	4320.3	4784.5	3610.1	3243.5	1714.6	1632.6	1408.3
80°	2563.5	3090.4	3104.9	2421.2	3020.5	2353.7	811.5	56.7	36.2	53.1
82.5°	1191.3	1328.8	1683.3	1122.6	1723.1	1166.0	167.6	0.0	0.0	0.0
85°	385.8	564.3	472.7	165.2	417.2	394.3	27.7	0.0	0.0	0.0
87.5°	22.9	47.0	12.1	0.0	0.0	0.0	0.0	0.0	0.0	0.0
90°	0.0	0.0	0.0	0.0	0.0	0.0	0.0	0.0	0.0	0.0

Cooper Lighting Solutions Photometric Lab
1121 Highway 74 South
Peachtree City, GA 30269



LM-79-2019: Approved Method: Electrical and Photometric Measurements of Solid-State Lighting Products

Report Prepared for

Cooper Lighting Solutions

MCGRAW EDISON

Report Number: SP1-2408-195-9

Test Date: 08/07/2024

Luminaire Tested: GALN-SB1A-830-U-5WQ

Data in this report applies to families of products including GALN-SB1A-830-U-5WQ.

Test Information

Test Method: LM-79-2019
 Report Number: SP1-2408-195-9
 Test Lab: COOPER LIGHTING SOLUTIONS
 Photometer: SP1 - 76IN SPHERE
 Measurement Geometry: 4π
 Issue Date: 08/07/2024
 Manufacturer: COOPER LIGHTING SOLUTIONS
 Product Line: MCGRAW EDISON
 Catalog Number: **GALN-SB1A-830-U-5WQ**
 Description: GALLEON AREA AND ROADWAY LUMINAIRE. (1) 80 CRI, 3000K, 350MA HIGH DENSITY LIGHTSQUARE WITH 26 LEDS AND TYPE V WIDE OPTICS

Spectral Parameters

CCT (K): 3050
 CIE u': 0.2476
 CIE v': 0.5251
 Duv: 0.0034
 CIE x: 0.4383
 CIE y: 0.4131
 CIE z: 0.1487
 Peak Wavelength (nm): 603
 Dominant Wavelength (nm): 581
 Purity: 55.55201
 Rf: 81.5
 Rg: 99.2

CRI (Ra):	81.0		
R1:	79.6	R9:	7.1
R2:	85.6	R10:	67.0
R3:	92.0	R11:	82.7
R4:	82.6	R12:	63.2
R5:	78.9	R13:	80.3
R6:	81.7	R14:	95.0
R7:	85.2	R15:	71.7
R8:	62.0		



Test Conditions

Stabilization Time: 20M
 Operation Time: 1H 20M
 Sphere Temperature (°C): 24.2

REPORT NUMBER: SP1-2408-195-9

Measurement and Test Equipment			
Instrument	Identification Number	Calibration Date	Calibration Due Date
Photometer	IN0058	6/18/2024	12/18/2024
Power Meter	INXT2011004	2/8/2024	2/8/2025
AC Power Source	IN0063	10/24/2023	10/24/2024
DC Power Source	IN0208	10/24/2023	10/24/2024
Sphere Thermometer	IN0085	10/24/2023	10/24/2024
Room Thermometer	IN0046	10/24/2023	10/24/2024

REPORT NUMBER: SP1-2408-195-9

CIE 1931 Chromaticity Diagram



CIE 1931 Chromaticity Diagram with 2017 ANSI 7-Step and 4-Step Quadrangles



Point lies inside the ANSI 3000K 4-step quadrangle

REPORT NUMBER: SP1-2408-195-9

Photopic Flux vs. Wavelength



Photopic Lumens: NR

λ (nm)	Power W [^] /nm	Lumens (ϕ /nm)	λ (nm)	Power W [^] /nm	Lumens (ϕ /nm)	λ (nm)	Power W [^] /nm	Lumens (ϕ /nm)	λ (nm)	Power W [^] /nm	Lumens (ϕ /nm)	λ (nm)	Power W [^] /nm	Lumens (ϕ /nm)
360	0	NR	490	168	NR	620	940	NR	750	35	NR	880	1	NR
365	0	NR	495	233	NR	625	897	NR	755	30	NR	885	1	NR
370	0	NR	500	300	NR	630	847	NR	760	26	NR	890	1	NR
375	0	NR	505	372	NR	635	790	NR	765	22	NR	895	1	NR
380	0	NR	510	430	NR	640	730	NR	770	19	NR	900	1	NR
385	0	NR	515	483	NR	645	668	NR	775	16	NR	905	1	NR
390	0	NR	520	524	NR	650	605	NR	780	14	NR	910	0	NR
395	2	NR	525	555	NR	655	545	NR	785	12	NR	915	0	NR
400	4	NR	530	581	NR	660	485	NR	790	10	NR	920	0	NR
405	7	NR	535	604	NR	665	430	NR	795	9	NR	925	0	NR
410	17	NR	540	623	NR	670	378	NR	800	8	NR	930	0	NR
415	34	NR	545	645	NR	675	331	NR	805	7	NR	935	0	NR
420	68	NR	550	667	NR	680	290	NR	810	6	NR	940	0	NR
425	128	NR	555	693	NR	685	251	NR	815	5	NR	945	0	NR
430	214	NR	560	719	NR	690	218	NR	820	4	NR	950	0	NR
435	339	NR	565	754	NR	695	188	NR	825	4	NR	955	0	NR
440	507	NR	570	791	NR	700	162	NR	830	3	NR	960	0	NR
445	573	NR	575	830	NR	705	139	NR	835	3	NR	965	0	NR
450	356	NR	580	873	NR	710	119	NR	840	3	NR	970	0	NR
455	217	NR	585	913	NR	715	102	NR	845	2	NR	975	0	NR
460	168	NR	590	948	NR	720	88	NR	850	2	NR	980	0	NR
465	113	NR	595	974	NR	725	76	NR	855	2	NR	985	0	NR
470	85	NR	600	994	NR	730	65	NR	860	1	NR	990	0	NR
475	85	NR	605	998	NR	735	55	NR	865	1	NR	995	0	NR
480	94	NR	610	994	NR	740	47	NR	870	1	NR	1000	0	NR
485	120	NR	615	973	NR	745	41	NR	875	1	NR			

REPORT NUMBER: SP1-2408-195-9

Scotopic Flux vs. Wavelength



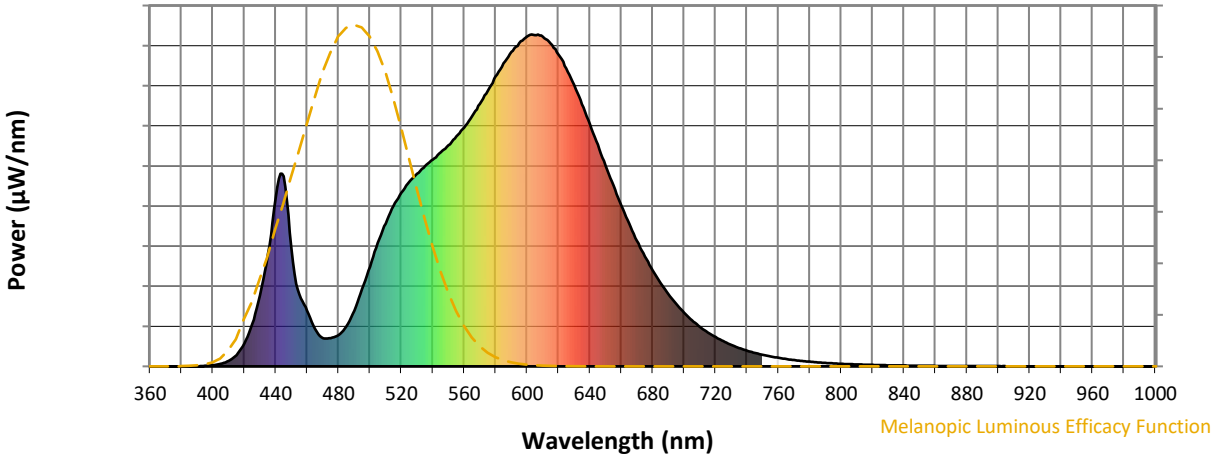
Scotopic Lumens: NR

S/P: 1.27

λ (nm)	Power W [^] /nm	Lumens (φ/nm)	λ (nm)	Power W [^] /nm	Lumens (φ/nm)	λ (nm)	Power W [^] /nm	Lumens (φ/nm)	λ (nm)	Power W [^] /nm	Lumens (φ/nm)	λ (nm)	Power W [^] /nm	Lumens (φ/nm)
360	0	NR	490	168	NR	620	940	NR	750	35	NR	880	1	NR
365	0	NR	495	233	NR	625	897	NR	755	30	NR	885	1	NR
370	0	NR	500	300	NR	630	847	NR	760	26	NR	890	1	NR
375	0	NR	505	372	NR	635	790	NR	765	22	NR	895	1	NR
380	0	NR	510	430	NR	640	730	NR	770	19	NR	900	1	NR
385	0	NR	515	483	NR	645	668	NR	775	16	NR	905	1	NR
390	0	NR	520	524	NR	650	605	NR	780	14	NR	910	0	NR
395	2	NR	525	555	NR	655	545	NR	785	12	NR	915	0	NR
400	4	NR	530	581	NR	660	485	NR	790	10	NR	920	0	NR
405	7	NR	535	604	NR	665	430	NR	795	9	NR	925	0	NR
410	17	NR	540	623	NR	670	378	NR	800	8	NR	930	0	NR
415	34	NR	545	645	NR	675	331	NR	805	7	NR	935	0	NR
420	68	NR	550	667	NR	680	290	NR	810	6	NR	940	0	NR
425	128	NR	555	693	NR	685	251	NR	815	5	NR	945	0	NR
430	214	NR	560	719	NR	690	218	NR	820	4	NR	950	0	NR
435	339	NR	565	754	NR	695	188	NR	825	4	NR	955	0	NR
440	507	NR	570	791	NR	700	162	NR	830	3	NR	960	0	NR
445	573	NR	575	830	NR	705	139	NR	835	3	NR	965	0	NR
450	356	NR	580	873	NR	710	119	NR	840	3	NR	970	0	NR
455	217	NR	585	913	NR	715	102	NR	845	2	NR	975	0	NR
460	168	NR	590	948	NR	720	88	NR	850	2	NR	980	0	NR
465	113	NR	595	974	NR	725	76	NR	855	2	NR	985	0	NR
470	85	NR	600	994	NR	730	65	NR	860	1	NR	990	0	NR
475	85	NR	605	998	NR	735	55	NR	865	1	NR	995	0	NR
480	94	NR	610	994	NR	740	47	NR	870	1	NR	1000	0	NR
485	120	NR	615	973	NR	745	41	NR	875	1	NR			

REPORT NUMBER: SP1-2408-195-9

Melanopic Flux vs. Wavelength



Melanopic Lumens: NR

M/P: 2.32

λ (nm)	Power W [^] /nm	Lumens (φ/nm)	λ (nm)	Power W [^] /nm	Lumens (φ/nm)	λ (nm)	Power W [^] /nm	Lumens (φ/nm)	λ (nm)	Power W [^] /nm	Lumens (φ/nm)	λ (nm)	Power W [^] /nm	Lumens (φ/nm)
360	0	NR	490	168	NR	620	940	NR	750	35	NR	880	1	NR
365	0	NR	495	233	NR	625	897	NR	755	30	NR	885	1	NR
370	0	NR	500	300	NR	630	847	NR	760	26	NR	890	1	NR
375	0	NR	505	372	NR	635	790	NR	765	22	NR	895	1	NR
380	0	NR	510	430	NR	640	730	NR	770	19	NR	900	1	NR
385	0	NR	515	483	NR	645	668	NR	775	16	NR	905	1	NR
390	0	NR	520	524	NR	650	605	NR	780	14	NR	910	0	NR
395	2	NR	525	555	NR	655	545	NR	785	12	NR	915	0	NR
400	4	NR	530	581	NR	660	485	NR	790	10	NR	920	0	NR
405	7	NR	535	604	NR	665	430	NR	795	9	NR	925	0	NR
410	17	NR	540	623	NR	670	378	NR	800	8	NR	930	0	NR
415	34	NR	545	645	NR	675	331	NR	805	7	NR	935	0	NR
420	68	NR	550	667	NR	680	290	NR	810	6	NR	940	0	NR
425	128	NR	555	693	NR	685	251	NR	815	5	NR	945	0	NR
430	214	NR	560	719	NR	690	218	NR	820	4	NR	950	0	NR
435	339	NR	565	754	NR	695	188	NR	825	4	NR	955	0	NR
440	507	NR	570	791	NR	700	162	NR	830	3	NR	960	0	NR
445	573	NR	575	830	NR	705	139	NR	835	3	NR	965	0	NR
450	356	NR	580	873	NR	710	119	NR	840	3	NR	970	0	NR
455	217	NR	585	913	NR	715	102	NR	845	2	NR	975	0	NR
460	168	NR	590	948	NR	720	88	NR	850	2	NR	980	0	NR
465	113	NR	595	974	NR	725	76	NR	855	2	NR	985	0	NR
470	85	NR	600	994	NR	730	65	NR	860	1	NR	990	0	NR
475	85	NR	605	998	NR	735	55	NR	865	1	NR	995	0	NR
480	94	NR	610	994	NR	740	47	NR	870	1	NR	1000	0	NR
485	120	NR	615	973	NR	745	41	NR	875	1	NR			

Summary

$R_f = 81.5$
 $R_g = 99.2$
 CIE $R_a = 81.0$
 $R_9 = 7.1$



Color Vector Graphics

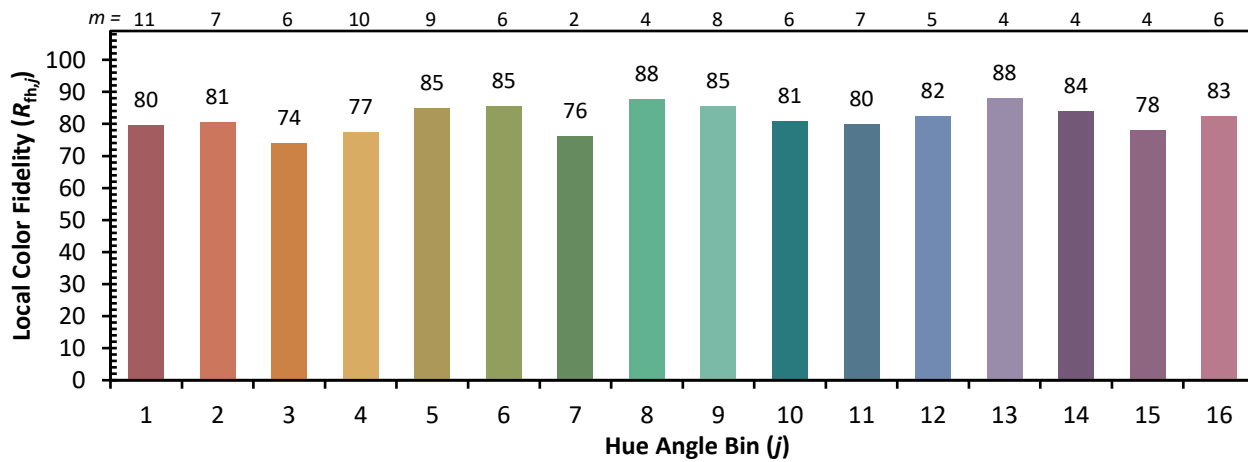
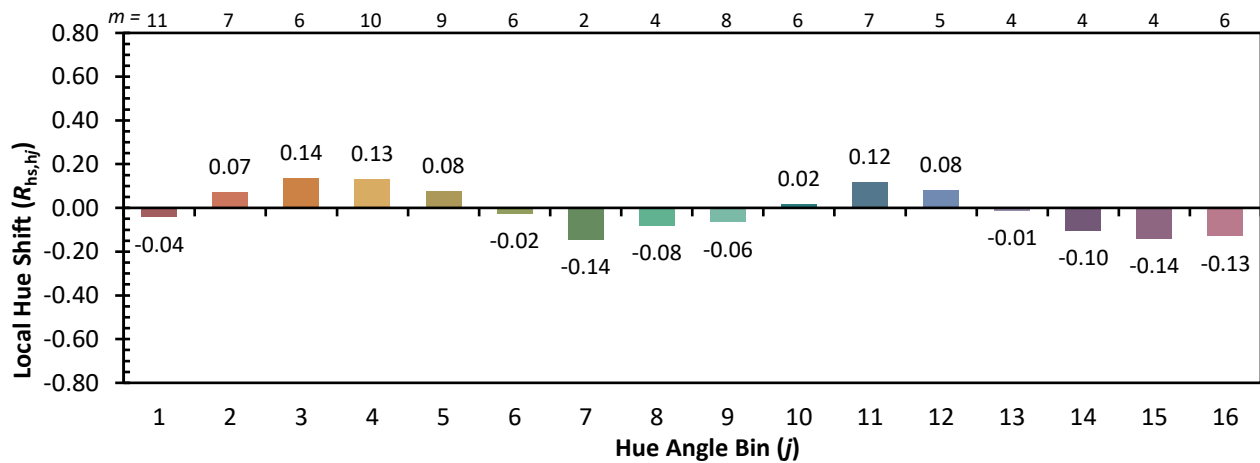
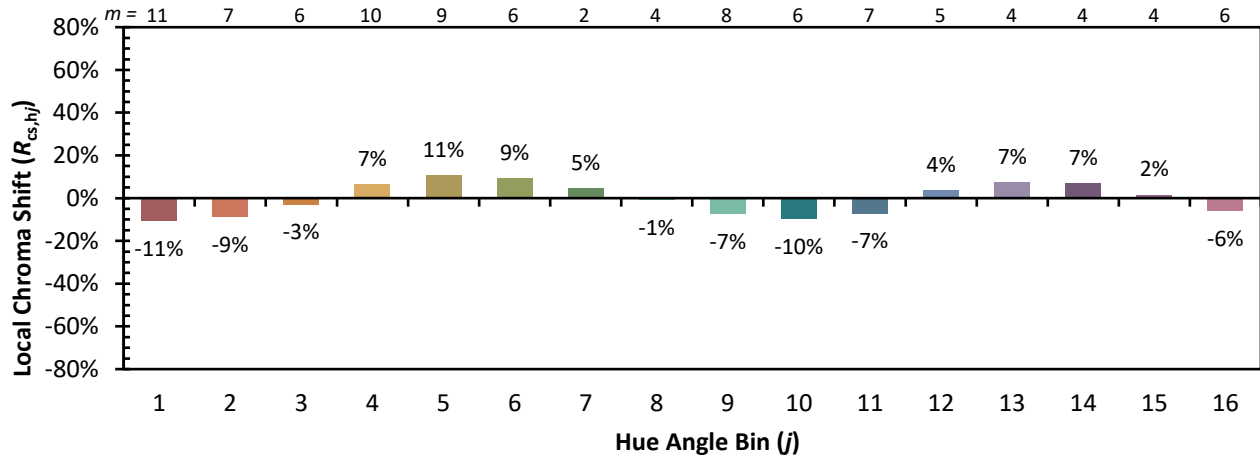


Individual Sample Fidelity Index ($R_{f,i}$)

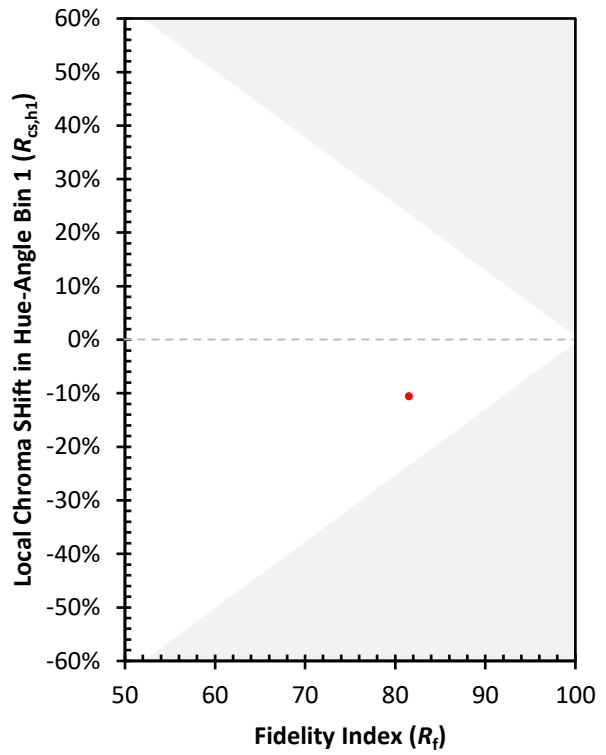
CES01 = 86	CES26 = 74	CES51 = 89	CES76 = 70
CES02 = 63	CES27 = 88	CES52 = 92	CES77 = 86
CES03 = 31	CES28 = 89	CES53 = 81	CES78 = 72
CES04 = 70	CES29 = 67	CES54 = 87	CES79 = 90
CES05 = 50	CES30 = 68	CES55 = 85	CES80 = 88
CES06 = 51	CES31 = 71	CES56 = 78	CES81 = 78
CES07 = 42	CES32 = 70	CES57 = 76	CES82 = 95
CES08 = 41	CES33 = 71	CES58 = 78	CES83 = 90
CES09 = 29	CES34 = 82	CES59 = 92	CES84 = 94
CES10 = 76	CES35 = 90	CES60 = 95	CES85 = 86
CES11 = 59	CES36 = 93	CES61 = 93	CES86 = 72
CES12 = 65	CES37 = 87	CES62 = 83	CES87 = 85
CES13 = 43	CES38 = 75	CES63 = 77	CES88 = 83
CES14 = 74	CES39 = 94	CES64 = 83	CES89 = 75
CES15 = 71	CES40 = 89	CES65 = 77	CES90 = 81
CES16 = 47	CES41 = 85	CES66 = 80	CES91 = 96
CES17 = 50	CES42 = 86	CES67 = 79	CES92 = 73
CES18 = 56	CES43 = 81	CES68 = 84	CES93 = 84
CES19 = 72	CES44 = 99	CES69 = 91	CES94 = 64
CES20 = 66	CES45 = 87	CES70 = 78	CES95 = 80
CES21 = 87	CES46 = 82	CES71 = 76	CES96 = 84
CES22 = 79	CES47 = 77	CES72 = 92	CES97 = 87
CES23 = 92	CES48 = 71	CES73 = 71	CES98 = 81
CES24 = 91	CES49 = 81	CES74 = 93	CES99 = 74
CES25 = 72	CES50 = 89	CES75 = 74	



Color Rendition by Hue-Angle Bin



Measure Comparisons



(END OF REPORT)